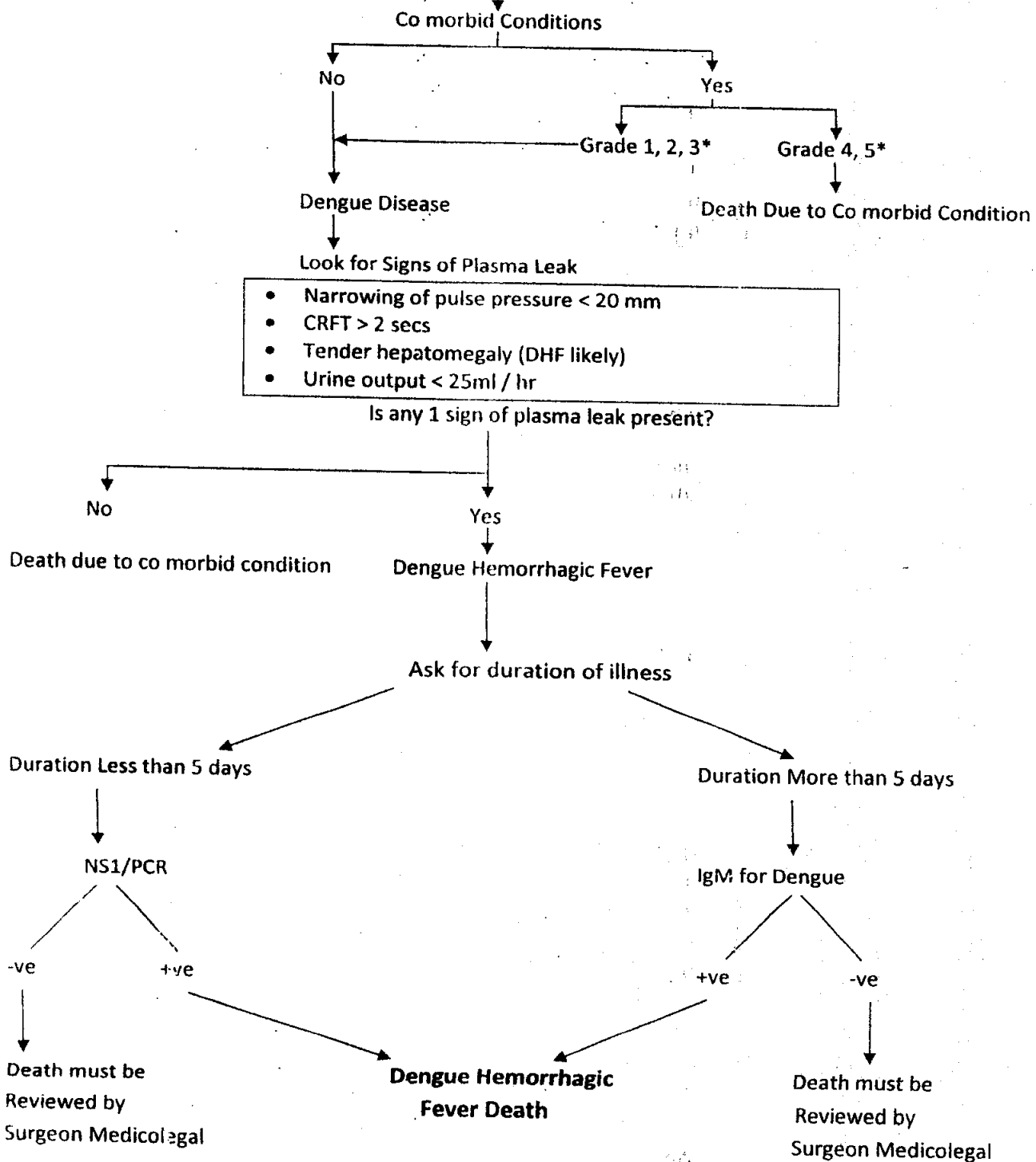


ALGORITHM FOR THE DECLARATION OF DENGUE DEATH IN HOSPITAL DURING DENGUE EPIDEMIC

Platelet count less than 100,000 + Clinical Symptoms (If > 3 symptoms)

- Fever, during last 10 days, lasting for more than 2 days
- Severe headache
- Retroorbital pain
- Severe muscular pain
- Severe backache or joint pains
- Rash on body
- Bleeding from nose, gums, cough, vomiting or stool
- Severe stomachache
- Decreased urine frequency in children



*FOR GRADE SEE THE REVERSE

Grading of Co morbid Conditions

Grade – I	Minimal Co morbid Condition	Well controlled	Extremely unliikely to have caused mortality
Grade – II	Minimal Co morbid Condition	Poorly controlled	Very unlikely to have caused mortality
Grade – III	Moderate Co morbid Condition	Well controlled	Unlikely to have caused mortality
Grade – IV	Moderate Co morbid Condition	Poorly controlled	Likely to have to contributed to mortality
Grade – V	Severe Cc morbid Condition		Likely to have to contributed to mortality